

FROM * PRICE

House & Land Package



BUILDING
QUALITY HOMES
SINCE 1949

SPEND \$5K & RECEIVE
\$15K
WORTH OF UPGRADES

STRUCTURAL
LIFETIME
GUARANTEE

ARMIDALE 34 | ELEVATE RANGE

\$903,661*

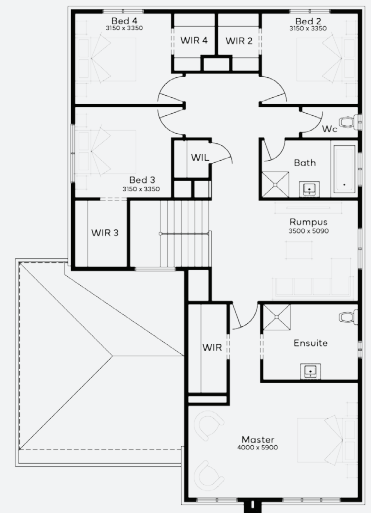
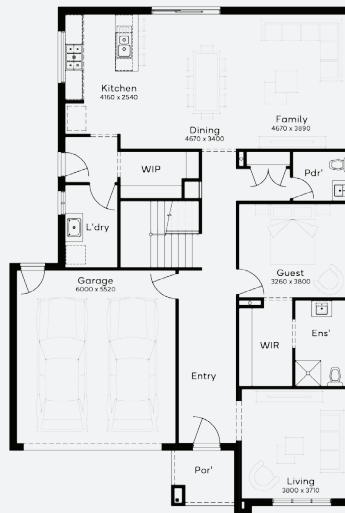
Lot 116, Waurm Ponds The Grange Estate (406m²)



FIRST HOME OWNERS -

INCLUSIONS

- + Generous Site Costs
- + Developer & council requirements
- + 40m² of coloured concrete Driveway
- + Colorbond Sectional garage door & remote controls
- + 20 LED Downlights to 20 additional light points
- + Floor coverings to entire house
- + 20mm Stone benchtops to kitchen, Bathrooms and Ensuite
- + Quality 900mm stainless steel dual fuel (gas burners and electric oven) freestanding upright cooker.
- + Ducted Heating and Choice of Ducted Evaporative Cooling or Split Systems to family and master bedroom
- + Plus much more!



For enquiries please contact: **Bruno Esposti - 0435219103**

simonds.com.au

*From pricing is based on standard plan, builders preferred siting, site costs allowance, and is subject to extreme site changes beyond our reasonable control and unknown at the time of print. All packages are subject to Developer and Council approval. Package Price does not include stamp duty, government, legal or bank charges. Community Infrastructure Levy and Asset Protection Permit are not included in pricing and is to be arranged by the client directly with the Developer (if applicable). Any alterations may incur additional charges. Confirm land price and availability prior to purchase. Simonds reserves the right to withdraw or amend pricing, inclusions and promotion at any time without notice. *Please refer to the terms and conditions at www.simonds.com.au/terms-and-conditions. This package applies to VIC - Elevate range only. Please speak with your sales consultant for further details. Pricing is current at 22/08/2024.

