



HOME
& LAND



RIVERSIDE221

CONTEMPORARY

LOT 118 BANROCK
COURT
WAURN PONDS

3 2 2

HOME SIZE:
23.7SQ

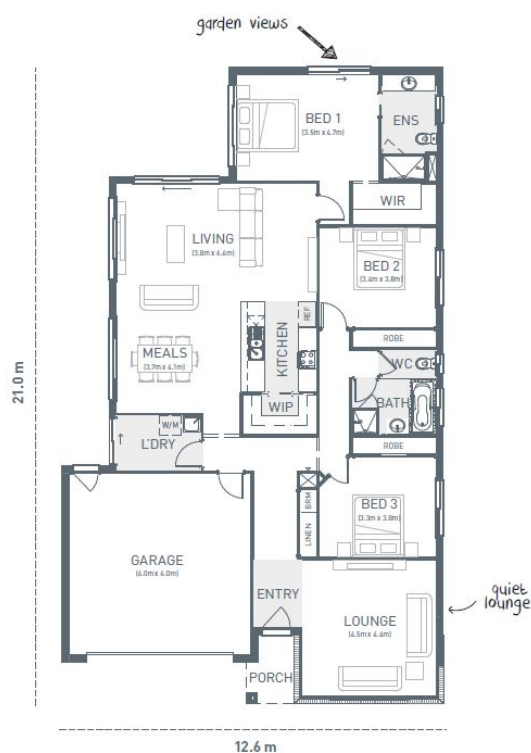
LOT SIZE:
448m²

PACKAGE PRICE:

\$815,395

INCLUSIONS:

- Double glazed windows & doors
- 2kw solar system
- Colorbond steel roof
- Site cost allowance
- Developer requirements



For more information contact:

Ash Afshar
ash@geelonghomes.com.au
0458 995 652

geelonghomes.com.au
Good to be HOME

THE
GRANGE
WAURN PONDS

Images are for illustrative purposes only and may not represent the final product. Prices are based on availability and price of land. Geelong Homes reserves the right to alter any price or substitute any home without prior notice. All house and land packages are subject to developers final approval. Speak to a new home consultant for more information. www.geelonghomes.com.au Images are for illustrative purposes only and may not represent the final product. Prices are based on availability and price of land. Geelong Homes reserves the right to alter any price or substitute any home without prior notice. All house and land packages are subject to developers final approval. Speak to a new home consultant for more information. www.geelonghomes.com.au