



The Grange Estate
Hams Road, Waurn Ponds
Lot 107

Facade: Bliss

House: 27.37 sq **Land:** 854 m2

4 2 2 2

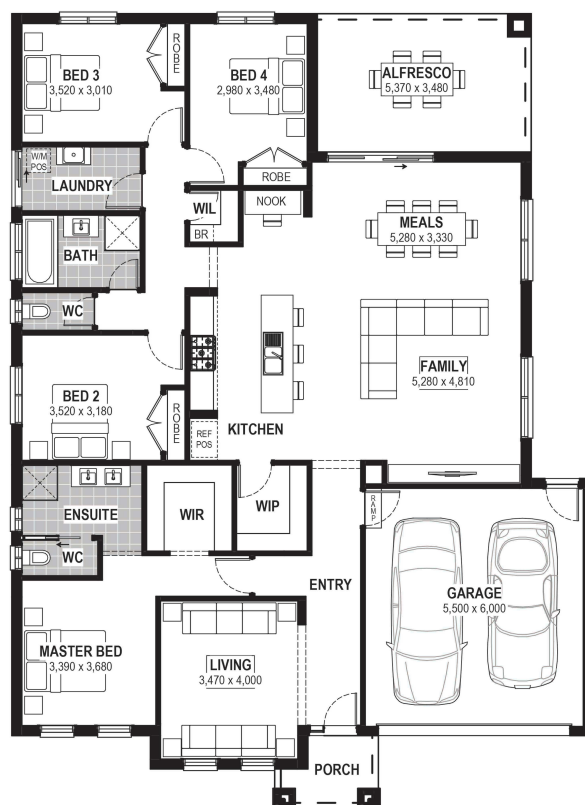
Brunswick 27

Inclusions

- Truecore Steel House Frame
- Colorbond Steel Roof (with Sarking)
- High Performance (uPVC) Double Glazed Safety Glass Windows & Doors
- 7 Star Energy Efficient to all orientations
- 7 x 440w Panels & 3KW Inverter (single phase)
- Bushfire Compliance to BAL 12.5
- 900mm Appliances
- 50 Year Structural Guarantee
- 900mm Rangehood & Upright Cooker
- Overhead Cupboards to Kitchen

Contact:

Christian Keepen
0437 853 822
houseandland@jgking.com.au



*Conditions apply. Speak to your New Home Advisor for further details