



**The Grange Estate**  
Banrock Court, Waurn Ponds  
Lot 118

**Facade:** Somerset

**House:** 27.37 sq **Land:** 448 m2

4 2 2 2

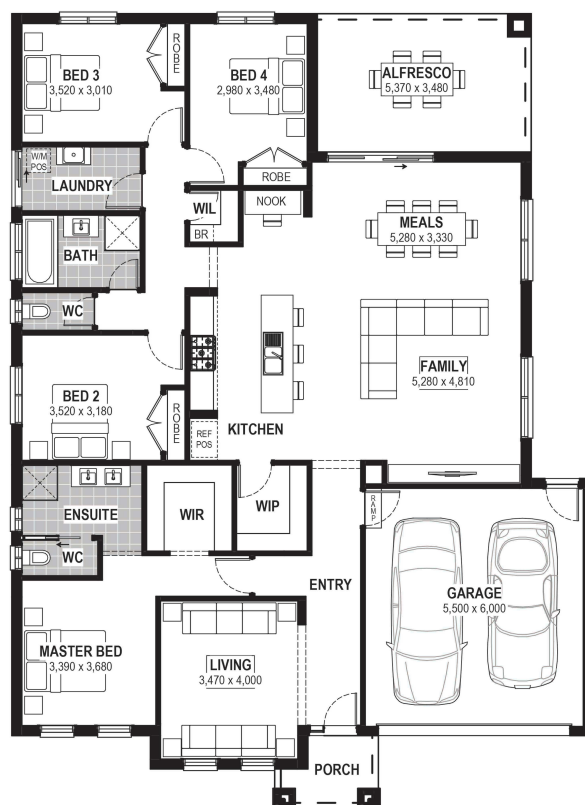
## Brunswick 27

### Inclusions

- Truecore Steel House Frame
- Colorbond Steel Roof (with Sarking)
- 8 Star Energy Efficient
- High Performance Double Glazed Windows & Doors
- 7 x 440w Panels & 3KW Inverter (single phase)
- Bushfire Compliance to BAL 12.5
- 900mm Appliances
- 50 Year Structural Guarantee
- 900mm Rangehood & Upright Cooker
- Overhead Cupboards to Kitchen
- 2550mm Ceiling Height
- Caesarstone Benchtops to Kitchen & Vanities
- Developer Guidelines Included
- Laminate Flooring & Carpet Throughout
- NBN Fibre Package
- Site Costs Allowance Included

### Contact:

Christian Keepen  
0437 853 822  
houseandland@jgking.com.au



\*Conditions apply. Speak to your New Home Advisor for further details