

FROM * PRICE

House & Land Package



BUILDING
QUALITY HOMES

SINCE 1949

SPEND \$5K & RECEIVE

\$50K

WORTH OF UPGRADES

STRUCTURAL
LIFETIME
GUARANTEE

HEATHCOTE 29 | INSPIRATIONS RANGE

\$1,093,268*

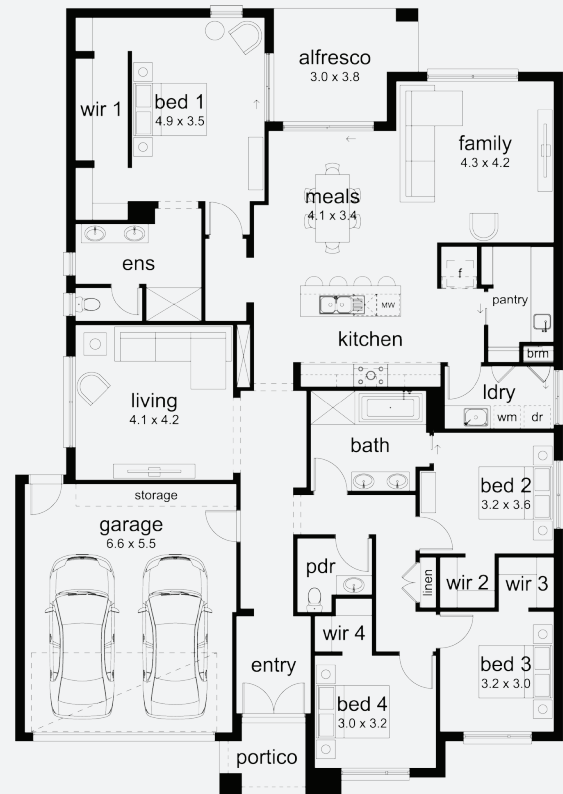
Lot 108, Waurm Ponds The Grange Estate (895m²)



FIRST HOME OWNERS -

INCLUSIONS

- + Generous Site Costs
- + Developer & council requirements
- + Photovoltaic panels with inverter
- + Feature front entry door
- + Colorbond Sectional garage door & remote controls
- + Floor coverings to entire house
- + 20mm Stone benchtops to kitchen
- + Quality stainless steel cooktop & oven
- + Ducted Heating
- + Plus much more!



For enquiries please contact: **Bruno Esposti - 0435219103**

simonds.com.au

*From pricing is based on standard plan, builders preferred siting, site costs allowance, and is subject to extreme site changes beyond our reasonable control and unknown at the time of print. All packages are subject to Developer and Council approval. Package Price does not include stamp duty, government, legal or bank charges. Community Infrastructure Levy and Asset Protection Permit are not included in pricing and is to be arranged by the client directly with the Developer (if applicable). Any alterations may incur additional charges. Confirm land price and availability prior to purchase. Simonds reserves the right to withdraw or amend pricing, inclusions and promotion at any time without notice. *Please refer to the terms and conditions at www.simonds.com.au/terms-and-conditions. This package applies to VIC - Inspirations range only. Please speak with your sales consultant for further details. Pricing is current at 04/03/2026.

